



Leeds
CITY COUNCIL

Climate emergency update
Sustainable Energy & Air Quality Team

Summary: What's happening in your area?



Public Sector Decarbonisation – over the last year...

- Air source heat pump and solar panels have been installed and commissioned at Churchwell Primary School, Morley North
- Air source heat pump and solar panels have been installed at Knowle Manor Home for Older People, Morley South.
- Air source heat pump and solar panels are due to be installed at Rothwell Leisure Centre soon.

Improving the energy efficiency of housing – apply before March 31...

- Homeowners on low incomes are still eligible to receive free solar panels and/or insulation if they live in an inefficient home (EPC D or lower) and have a household income of £30,000 or less.
- Landlords with inefficient homes (EPC D or lower) can receive subsidies of two-thirds of the cost of installing solar panels and/or insulation (up to £5,000) if the property's tenants earn less than £30,000.

Accelerating the transition to zero emission vehicles...

- Multiple businesses/charities in your area have completed their free trial of an electric van.
- Four rapid EVCPs have been installed at Annie Street Car Park, Morley Leisure Centre, ASDA Morley, Marsh Street Car Park and Rothwell Leisure Centre thanks to a joint LCC/WYCA scheme in partnership with EQUANS.
- 7.5kW residential charging have been installed at Butcher Lane Car Park and will soon be installed at Fountain Street Car Park (both 2 dual chargers – 4 bays)

Please note: The above summarises recent work led by SEAQ team. There are many other projects led by other council teams (e.g. Housing, Parks and Countryside) making a positive environmental difference across the city.

Public Sector Decarbonisation Scheme

- The council has secured £25.3 million from the Public Sector Decarbonisation Scheme for green upgrades.
- Over the last year, we've upgraded nearly 40 public buildings including schools and leisure centres. These upgrades will cut Leeds' carbon footprint by c.4,000 tonnes.
- This scheme has helped to directly create 27 skilled green FTE jobs in Leeds in 2021. Hundreds more jobs will be indirectly supported.



What this means for your area:

- Air source heat pump and solar panels have been installed and commissioned at Churchwell Primary School, Morley North
- Air source heat pump and solar panels have been installed at Knowle Manor Home for Older People, Morley South.
- Air source heat pump and solar panels are due to be installed at Rothwell Leisure Centre soon.

Funded solar and insulation for homeowners

- Low income homeowners and landlords with low income tenants can still apply for free (homeowners) or subsidised (landlords) solar panels and cavity, loft or attic room insulation.
- More than 280 households citywide have already benefited. **Apply before March 31.**
- As well as cutting carbon, the upgrades will cut energy bills and could increase property value.

This scheme could benefit your area:

- Property owners should apply if the total income of inhabitants (tenants or household) is under £30,000 (or they receive certain benefits).
- Better Homes Yorkshire will then need to confirm that properties are both eligible (EPC rating D or below) and of suitable construction.
- [Go to www.betterhomesyorkshire.co.uk/leeds](http://www.betterhomesyorkshire.co.uk/leeds) or call 08005 971500 to apply.



Anthony, a Morley resident, has installed solar PV panels using the scheme

Help us grow the White Rose Forest

- LCC is working with communities, businesses and landowners to increase the city's tree canopy cover and improve access to woodland by 2050.
- Woodland and green space captures carbon, provides habitat for wildlife, is linked to improved health and wellbeing, reduces flood risk.
- Parks and Countryside will plant 50 ha of new trees on council-owned land every year as part of our 'Woodland Creation Scheme'. Send any queries/suggestions to: woodlandcreation@leeds.gov.uk

- **The White Rose Forest team is available to support landowners and their agents to develop tree planting and woodland creation projects across the region.** Support can include planning and design, stakeholder engagement, help with regulatory approvals, funding and delivery. Apply for support at www.whiteroseforest.org



Accelerating the EV transition...

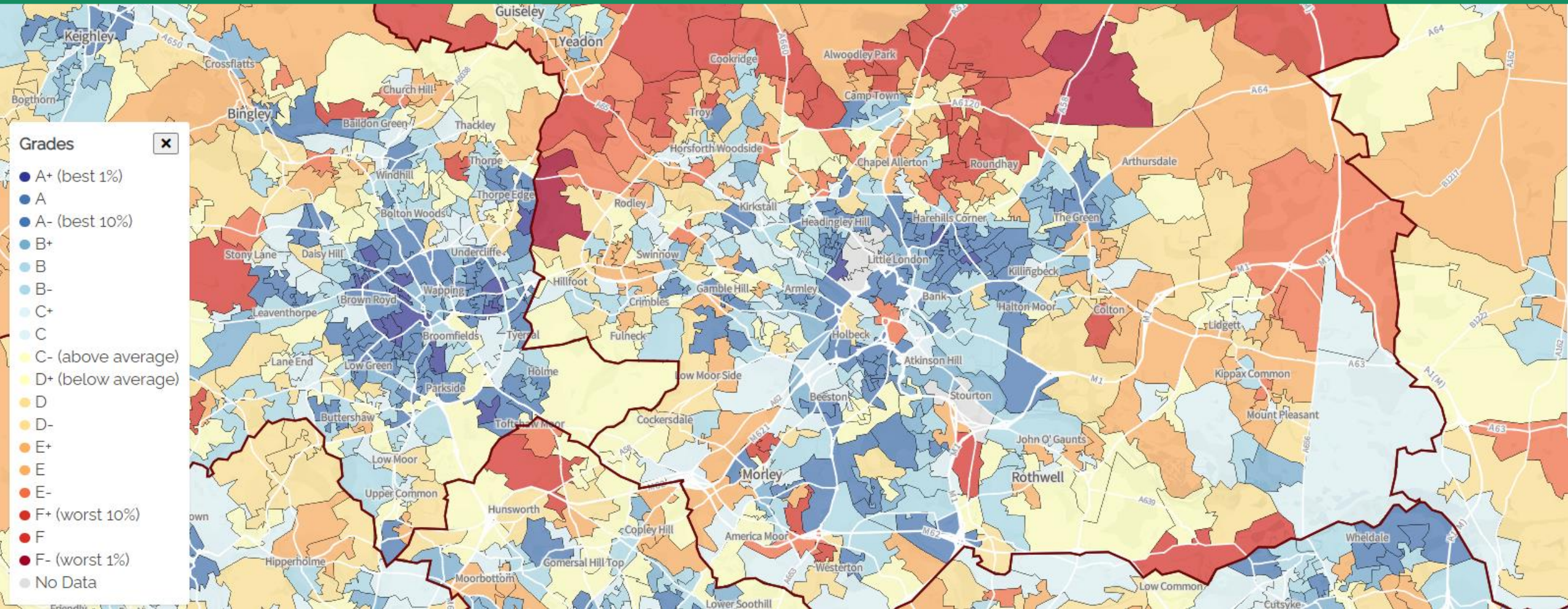
- Around 160 businesses, charities and organisations in West Yorkshire have trialled an electric vehicle free of charge for up to two-months since January 2020.
- Examples of local businesses that have participated in the trials include: Flying Zebra Cleaning, Cucina Pizzeria, Gastech Services.
- The scheme has directly replaced 130,000+ diesel/petrol miles with zero emissions. Half of participating organisations say they're considering switching to electric vehicles. At least 20 vehicles have been procured by organisations post-trial.
- The number of plug-in vehicles in Leeds has increased from 10,000 to 20,000 over the last 4 quarters.

What this means for your area:

- Four rapid EVCPs have been installed at Annie Street Car Park, Morley Leisure Centre, ASDA Morley, Marsh Street Car Park and Rothwell Leisure Centre thanks to a joint LCC/WYCA scheme in partnership with EQUANS.
- 7.5kW residential charging has been installed at Butcher Lane Car Park and will soon be installed at Fountain Street Car Park (both 2 dual chargers – 4 bays).



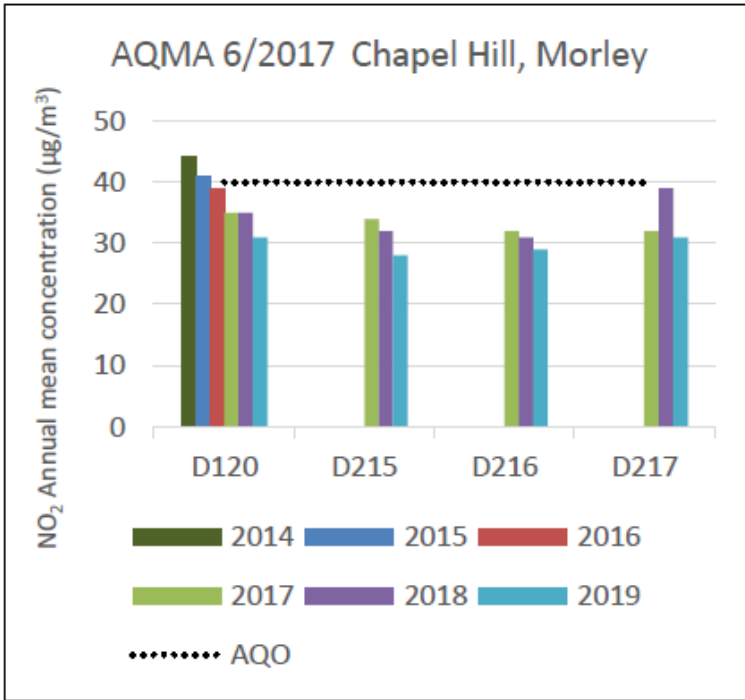
Summary: Carbon emissions for your area



Estimated average annual carbon footprint per person for each LSOA.

Based on a mix of local and national data. Each area has a grade from A+ (low emissions) to F- (high emissions) in comparison to the England average. Source: [Place-based carbon calculator](#)

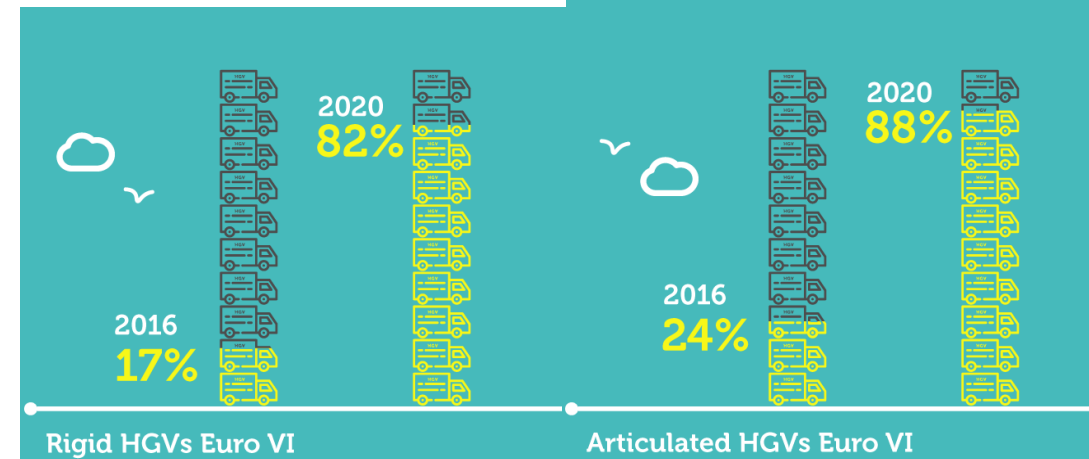
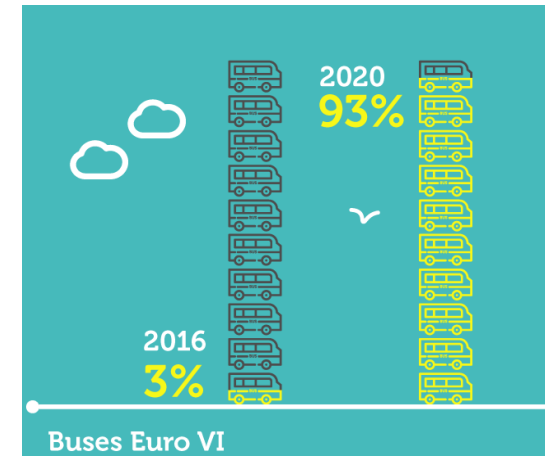
Brief air quality update



Chapel Hill, Morley AQMA is now being considered for revocation due to improved air quality.

Since the CAZ was announced, businesses have quickly switched to cleaner vehicles.

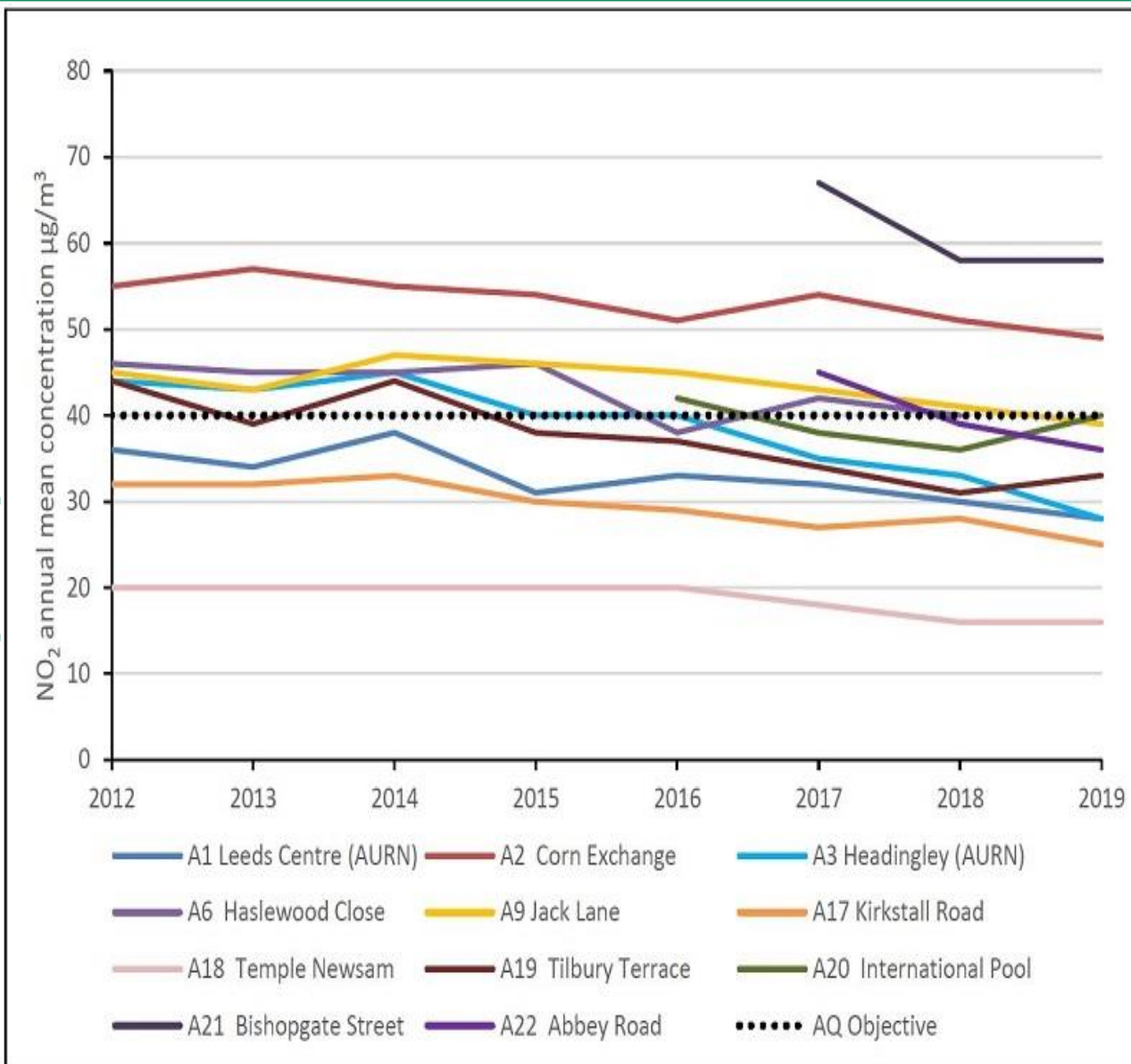
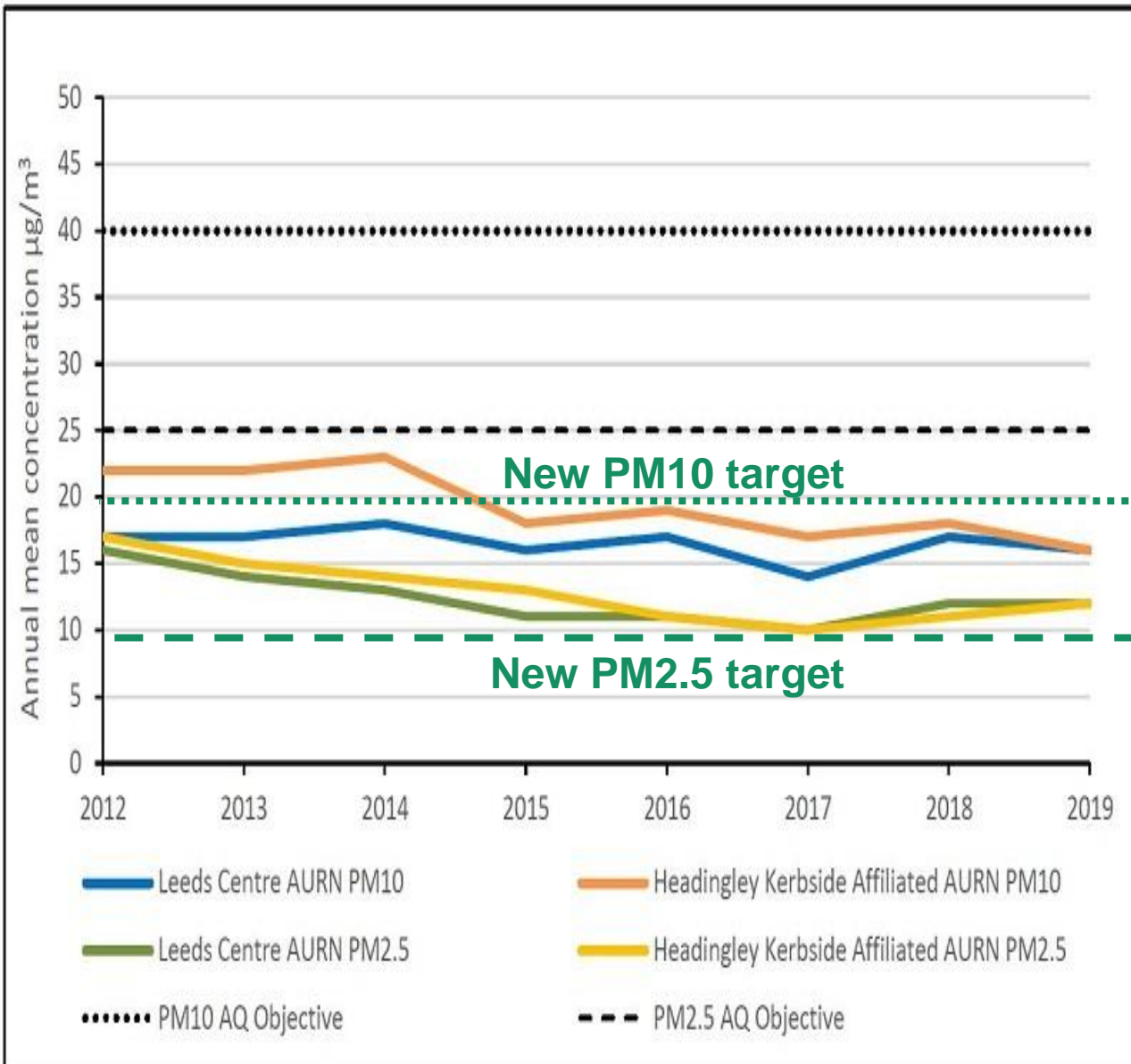
Around half of Leeds licensed taxi/p.hire trade now uses ULEV vehicles.



Places of education can apply now for a free anti-idling banner. 150+ have previously been given free of charge.



Air quality update



Summary: How you can support



1. Help promote free solar PV/insulation offer until March 31.

Low income homeowners (and landlords with low income tenants) could be eligible for FREE solar panels and/or insulation. Hundreds are already benefiting, but we still have funding for another 100.

2. Help promote support for tree planting to landowners

Landowners and farmers in Leeds can receive support and expert advice from the White Rose Forest partnership for tree planting schemes. Can you help us to make them aware?

3. Sign up for the Leeds Climate newsletter to find out what is happening in Leeds every month

We can't add recipients without their consent so please let us know if you'd like to subscribe.

4. Pilot Community Climate Action Training with Leeds DEC

Leeds DEC is piloting place-based Community Climate Action Training in Seacroft early next year. Would your area be interested in training?

5. Promote the Leeds By Example website

The Leeds By Example website is filled with ideas, actions and resources that individuals can use to reduce their own impact on the environment. Go to: www.leedsbyexample.co.uk



Leeds
CITY COUNCIL

End of presentation
Additional slides follow

Citywide emissions

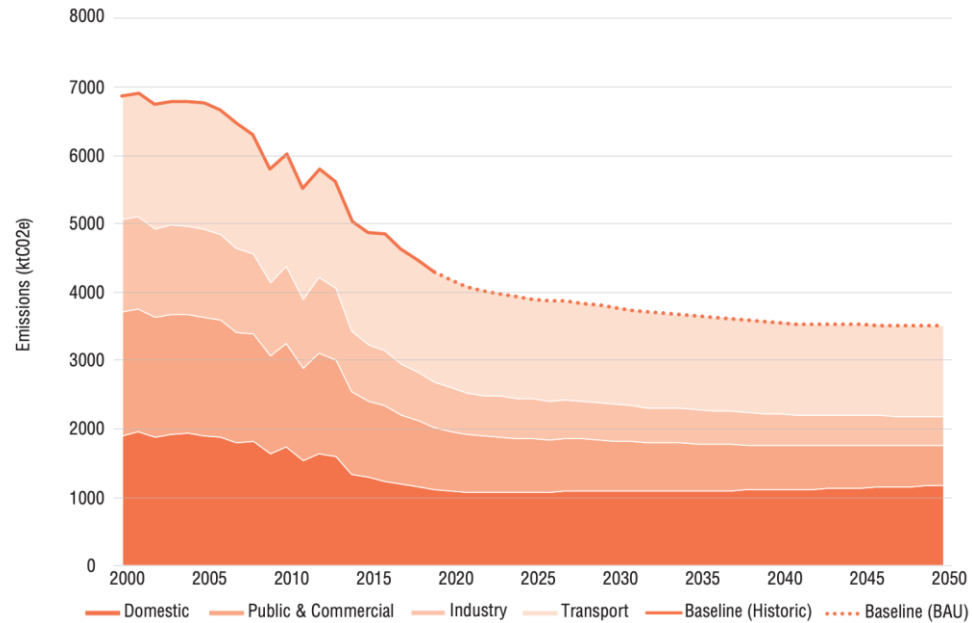


Figure 1: Leeds' Scope 1 and 2 carbon emissions (2000-2050)

Source: Leeds Climate Commission
Note: Scope 3 emissions not included in charts

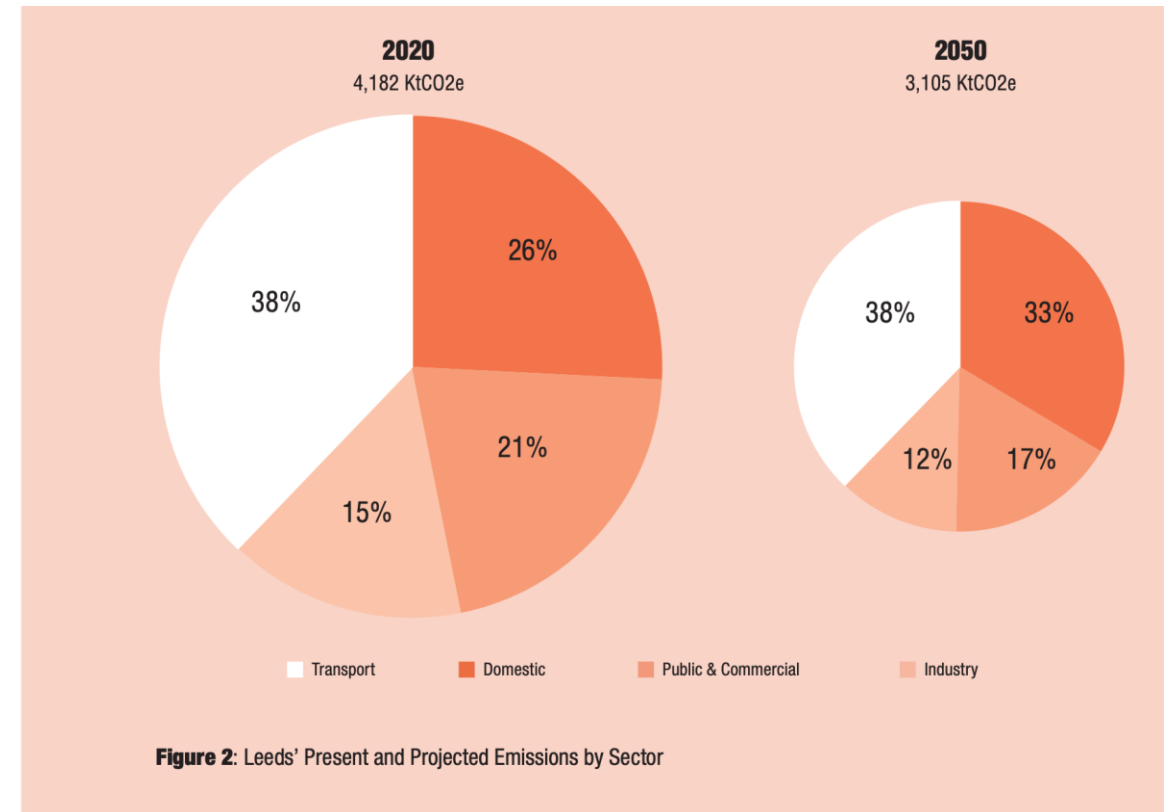


Figure 2: Leeds' Present and Projected Emissions by Sector

Citywide key aims

Becoming a carbon neutral city means working towards the following aims as quickly as possible—but more support from business, communities and national policy is needed:

1. Make buildings and technologies more energy efficient;
2. Phase out non-renewable heat and power sources in a resilient way;
3. Transition towards cleaner travel modes and technologies;
4. Pivot towards a more circular economy;
5. Clean industrial processes;
6. Protect, restore, and create green and blue spaces;
7. Offset or capture excess carbon emissions;

Whilst working towards stopping the worst impacts of climate change, Leeds should also ensure that the city is prepared and adapted for already ‘baked in’ effects of climate change.

Climate action plan: Buildings summary

- **Around half of the city's carbon footprint comes from heating and powering our buildings, particularly from those that are poorly insulated or heated by oil/gas.**
- LCC is retrofitting existing council-owned buildings by installing insulation, heat pumps, solar panels and LED lighting. We've committed to invest £100 million to improve council housing by 2025.
- We're also installing £25 million of green upgrades to install renewables and efficiency upgrades on public buildings and we're looking at ways to secure private investment to fund additional upgrades in publicly owned buildings.
- Our energy efficiency standards for new developments push sustainability and efficiency and our planning policy is currently being reviewed.
- However, national policy currently limits local authority powers and still allows developers to build inefficient buildings.



Climate action plan: Transport summary

- **More than a third of the city's carbon footprint comes from travelling for work and leisure** mostly from diesel and petrol cars. Frequent flyers have very large carbon footprints from international flights, however are only a minority of Leeds residents.
- We've set targets (in line with regional strategies) to increase uptake of cycling, rail and bus journeys and we're installing £200m infrastructure to make public transport more attractive and active travel more accessible.
- We've given discounted parking, free vehicle trials and we're installing public charge points to accelerate the transition to zero emission vehicles. We've given £7m to help local businesses switch to cleaner vehicles.
- Our fleet has more zero emission vehicles than any UK local authority already and we're purchasing our first electric refuse vehicles this year. LCC will also phase out staff payments for diesel and petrol miles.
- Leeds is working with WYCA to secure and deliver a modern mass transit system for Leeds and West Yorkshire.
- However, technological development is still needed to decarbonise larger vehicles such as freight, shipping and aviation. More rail investment is needed to phase out diesel trains.



Climate action plan: Wildlife summary

- **The UK's biodiversity is under threat, in large part due to habitat destruction. Our greenest, wildest spaces help us capture atmospheric carbon. Protecting wildlife can help us to reach net zero.**
- We've committed to working with communities, businesses and landowners to practically double the city's tree canopy cover from 17% to 33% by 2050 as a contribution to the White Rose Forest. Last year we planted 200,000 trees on council land.
- We're also planting more wildflower meadows and using relaxed mowing where possible to support pollinating insects. We're introducing new signs explain what these are, funded by sponsors.
- As part of our Flood Alleviation Scheme, we're delivering ambitious natural flood management measures. FAS has already planted 300,000 trees in the River Aire Catchment to reduce the risk of flooding.



New signage for wildlife friendly schemes



- SEAQ has worked with Parks and Countryside and Communications to develop new signage and make relaxed mowing more visible.
- Parks and Countryside are leading on securing sponsorship and installing signs.
- Similar signs will also be installed in wildflower areas that were formally planted with floral bedding
- Signs are to be installed along the main primary networks.
- Local businesses will be approached to work in partnership with Parks and Countryside.



Climate action plan: Food and Waste

- **The average household in Leeds wastes 200kg of food each year and as a city we throw away 600,000 tonnes of other stuff.** We need to reduce the amount we waste, find ways to shop and eat sustainably and move towards a more circular economy.
- Leeds City Council has committed to cut the carbon footprint of our average meal served or sold by the council in half by 2030. We'll do this by sourcing more food from Yorkshire and surrounding regions, ending air-freighted food imports, making our menus tastier but greener, and cutting kitchen emissions.
- We've virtually eliminated household waste going to landfill. Instead, non-recyclable waste that can't be recycled is used to power our flagship district heating network. This is now providing affordable, low-carbon heat to almost 2,000 homes, businesses and public buildings—cutting emissions from landfill and heating.
- Businesses, waste industry and local organisations came together to trial a new approach to recycling on-the-go in 2018. Our Leeds By Example bins have collected and recycled over 600,000 coffee cups, 55,000 plastic bottles, and 65,000 cans across 124 recycling points. We've recently introduced new ones in town centres.
- We've supported 3rd sector and community organisations introduce innovative recycling schemes for school uniforms, laptops and more.





Leeds
CITY COUNCIL

Follow us on Twitter: @LeedsCC_CEAQ
Email us at: climate.emergency@leeds.gov.uk